

STAHL'S[®] Hotronix[®] CATALOG



THE WORLD'S BEST-SELLING HEAT PRESSES

STAHL'S[®]
EUROPE • AFRICA • MID EAST



UPPER PLATEN COVER

PROTECTS YOUR UPPER PLATEN FROM RESIDUE, INKS AND OTHER ADHESIVES.

The upper platen cover is much like the lower platen, it is designed to protect against contamination. It doesn't however replace the need for a non-stick cover sheet. Direct-to-garment and sublimation printers consider it an essential accessory to protect their heating element from steam and chemical buildup.

UPPER PLATEN COVER 40X50 CM

125339



GRIP COVER SHEET

WAX COATED COVER SHEET

A wax coated cover sheet, produces a slight matt finish when you reprint your heat transfer. Each sheet can be reused many times, not suitable for use with sublimation.

GRIP COVER SHEET,
APPROX. 38X48 CM, 1 PKG = 25 PCS.

013685



GRIP RUBBER MAT

HIGH QUALITY SILICONE CLOTH THAT ABSORBS HEAT VERY WELL.

Ideal for the application of CAD-CUT® materials. Ideal for printing transfers on shoes. It produces a slightly textured finish. (Attention: reduces the application heat up to 20°C, please take note of this when printing.)

GRIP RUBBER MAT, APPROX. 46X56 CM

162216

CHANGE PLATENS

TO SEE WHICH PLATENS
ARE AVAILABLE FOR
YOUR HEAT PRESS,
TURN TO PAGE 42

CAP PLATENS

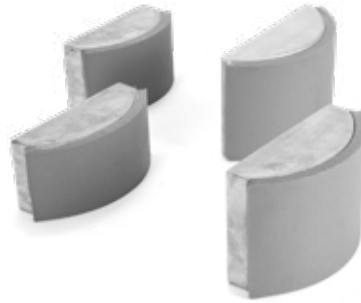
Make decorating hats easier with interchangeable cap platens. Apply transfers or letters and numbers on visors, bucket hats, baseball caps and more. Perfect for adding designs to the front, back, side or brim of headwear.

7 x 16 cm - for low-profile caps

7,5 x 14,5 cm - for lower-crown caps

10 x 16 cm - for full-crown ball caps

10 x 22 cm - for oversized caps



QUICK SLIP LOWER PLATEN PROTECTOR

Reduce wear and tear on the lower platen of your heat press with the Quick Slip Lower Platen Protector. This non-stick fitted cover slips snugly over the bottom heat press platen. A must-have for Threadability™, platen protectors make it easy to load and unload garments, increasing productivity.

15x25 cm 38x38 cm

20x25 cm 40x40 cm

28x38 cm 40x50 cm

